

abbotFox



Nursery Close, Norwich, NR6  
£200,000

“

We are a team of genuine individuals who hold a deep passion for both property and marketing. Collectively, we bring over 70 years of experience in the property market of Norfolk and Suffolk. Our affection for both counties runs deep, and we are enthusiastic about sharing our passion with you.

Colin McKenzie | **Branch Partner**







## THE DETAIL \_\_\_\_\_

abbotFox presents this well proportioned two bedroom bungalow, ideally positioned within the sought after suburb of Hellesdon.

Occupying a generous plot within a quiet residential setting, this home offers comfortable single-storey living, complemented by a range of practical features. The accommodation includes a spacious lounge diner, fitted kitchen, two bedrooms, shower room and a conservatory that provides additional living accommodation.

Outside, the property benefits from off-road parking and a garage, ensuring convenience for residents and visitors alike.

Located within easy reach of local amenities, transport links and scenic green spaces, this home represents an ideal opportunity for those seeking a peaceful yet well connected setting. An internal viewing comes highly recommended.

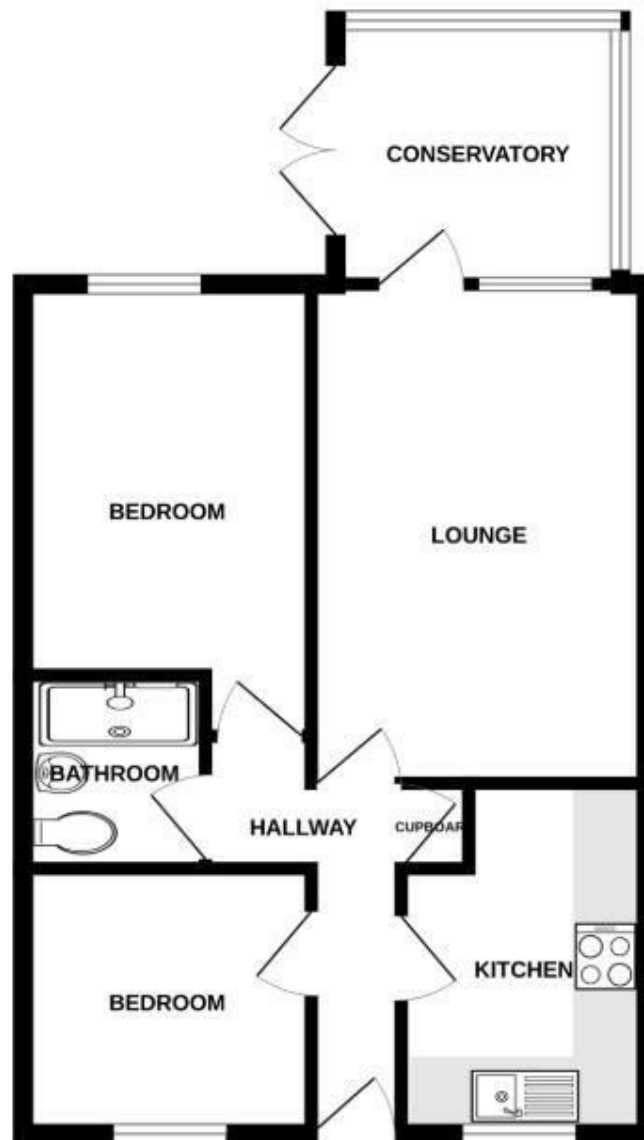






## THE HIGHLIGHTS \_\_\_\_\_

- Two bedroom bungalow
- Popular location
- Easy access to local amenities
- Garage and parking
- Generous living accommodation
- Viewing advised



*Let's talk*

01603 660000

[sales@abbotfox.co.uk](mailto:sales@abbotfox.co.uk)

@abbotfox

EPC RATING -

Disclaimer – In accordance with the Property Misdescriptions Act, the company abbotFox gives notice that all descriptions, references to condition, necessary permissions for use and other details are given in good faith and believed to be correct, but any purchaser should not rely on them as statements of fact, and must satisfy themselves by inspection or other means, as to their accuracy.